

Stylemaster *Homes*

PRESENTS

Oceanview 48 RB Burleigh Facade



23 Desertrose Crescent, Bridgeman Downs | Lomandra Estate



Head Office (07) 3368 9700

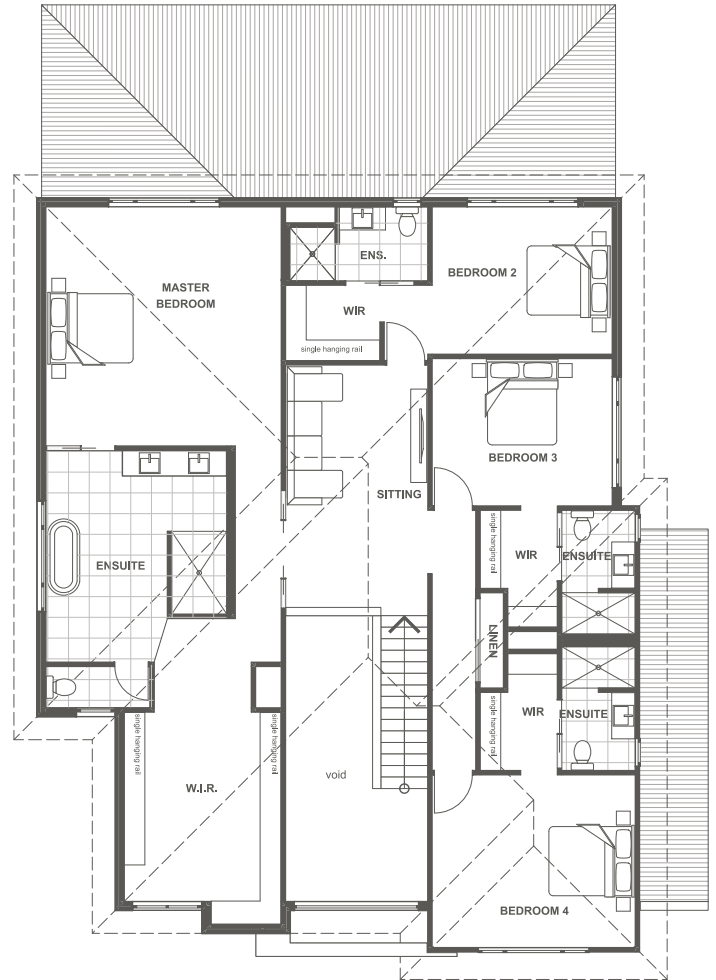
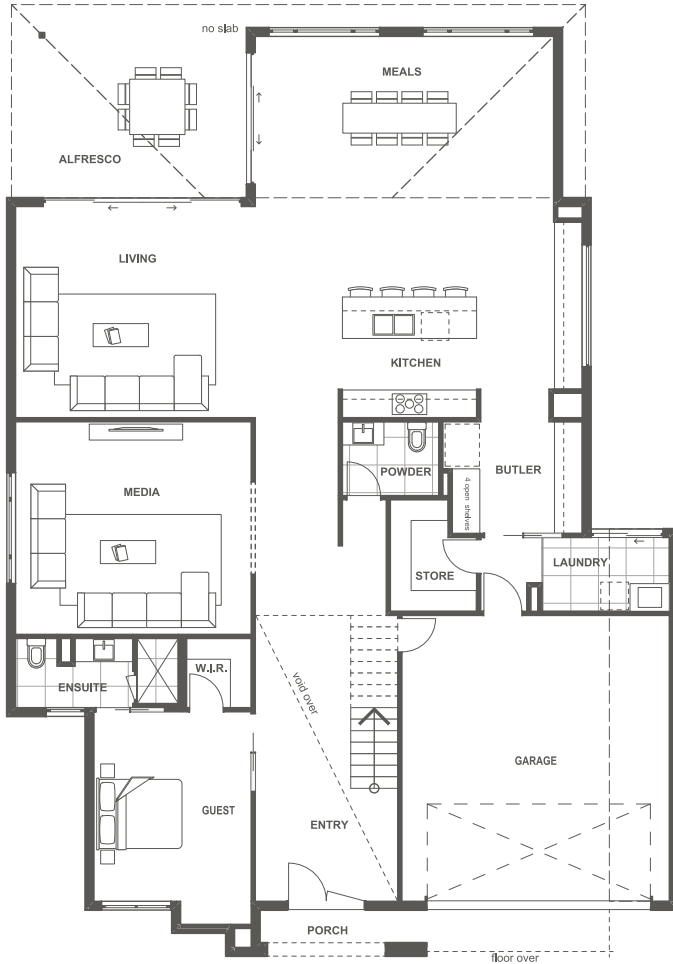
For full display home details, opening times and days or
to take a virtual tour visit: [STYLEMASTERHOMES.COM.AU](https://stylemasterhomes.com.au)

ABN 73 103 729 988 QBCC 1025309

Oceanview 48 RB

 5
  5.5
  3
  2

SUITS 18M+ LOT WIDTH | TRADITIONAL



TOTAL
449m²

AREAS

| | |
|------------------|-----------------------------|
| Ground Living | 197.21 m ² |
| First Living | 192.57 m ² |
| Garage | 35.96 m ² |
| Alfresco / Patio | 19.19 m ² |
| Porch | 3.62 m ² |
| Total | 448.55 m² |

HOUSE DIMENSIONS

| | |
|--------|----------------------|
| Width | 14.56 m ² |
| Length | 20.14 m ² |

*All areas based on floorplan of traditional facade. Lot widths nominated should only be used as a guide and may vary according to Estate requirements, Council requirements and in some cases small lot codes. Your consultant will verify suitability of home to fit Lot selected. All facades, photos and images are of illustrative purposes and should be used as a guide. They may depict items such as landscaping, fences, driveways, lights, balustrades, external wall finishes, roofing material, outdoor entertaining areas, pools and pool landscaping which are not included in our standard pricing. Additional items such as decorative finishes, fixtures, fittings and window coverings may not be included. Please consult our Sales Consultants for full details on inclusions.